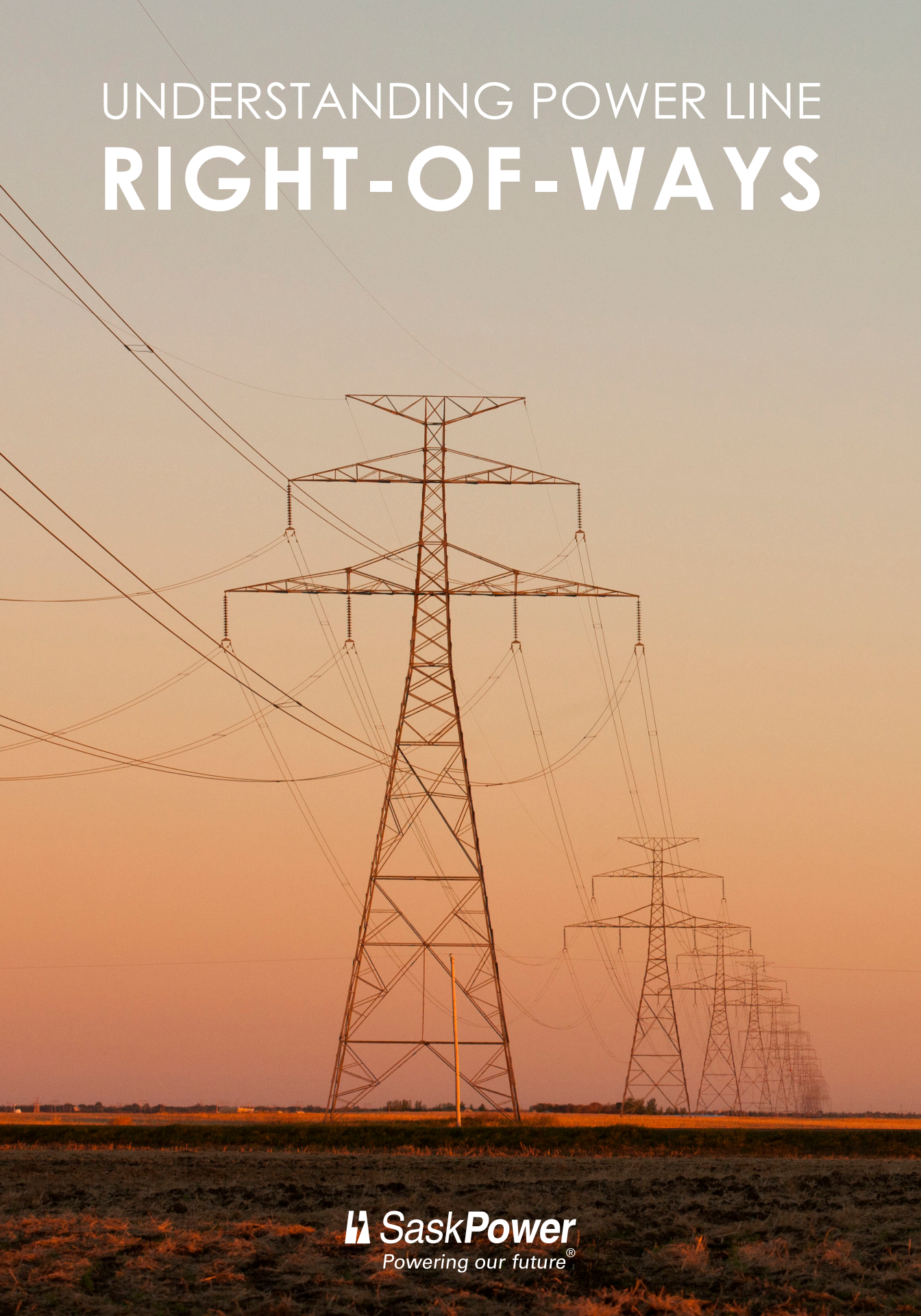


UNDERSTANDING POWER LINE RIGHT-OF-WAYS





UNDERSTANDING RIGHT-OF-WAYS

SaskPower designs power lines to be as safe and reliable as possible, but electricity can be dangerous. When your power goes out, we work as quickly and safely as possible to restore it. But, if access to our right-of-way (ROW) is blocked, a serious risk is posed to the safety of both you and our team.

WHAT IS A ROW?

A ROW is a type of easement — an agreement that provides us access onto your property to inspect, maintain or repair our equipment at any time.

It also outlines a minimum ROW boundary zone around power lines that must remain clear. Any obstruction is considered an encroachment and poses a risk to your safety and our ability to complete work.

To make sure you're not encroaching, always reference your ROW agreement. It provides specific information about the exact width of the boundary zone, which depends on the voltage and design of the power line on your land.

Always reference information specific to your property for the exact width to ensure you are not encroaching.

ENCROACHMENTS

Some of the most common encroachments that are required to be removed from the ROW include:

- Hot tubs and swimming pools, including temporary ones.
- Stockpiling of excavated building or other material (e.g., gravel pits).
- Grain bins.
- Storage or handling of flammable or explosive material.
- Bales.
- Fuel tanks for refueling vehicles or equipment.
- Deposit of any fill material.
- Long-term vehicle parking
- Buildings or portions of buildings, including foundations and eaves. Nothing should ever be attached.

ROW USER EXPECTATIONS

As a landowner, you have the right to use your property within the designated ROW boundary zone. But, you're required to do so in a way that fulfills your ROW agreement.

As a user of the ROW, it's important that you:

- Comply with the ROW agreement as well as all applicable legislation, regulations, guidelines, orders and standards.
- Release SaskPower from any liability arising from your use of the ROW.
- Be responsible for any damage to SaskPower's equipment due to your use of the ROW.
- Assume the cost of any required modifications, protection or relocations of SaskPower equipment to accommodate your proposed use.

- Use non-metallic, non-flammable and non-toxic materials.
- Not inhibit or interfere with SaskPower's access to, and ability to safely operate and maintain, our towers, poles, lines and other infrastructure.

SASKPOWER'S RESPONSIBILITY TO LANDOWNERS

If SaskPower creates any damage while working on your land, we'll restore it to be as close to its original condition as possible. If damage remains or if crops are damaged, you'll be reasonably compensated for that, too.

Please reach out to us at **310-2220** if you have any concerns.





WORKING SAFELY AROUND ELECTRICITY

Electricity is always trying to get to the ground by the easiest route possible. If something that conducts electricity gives that electrical current an easy path to the ground, it will take it. Near-contact or contact with electrical equipment and power lines is extremely dangerous. Approaching too closely can be fatal.

PLEASE TAKE CAUTION WHEN PERFORMING THE FOLLOWING ACTIVITIES:

- Crossing the ROW with machinery or vehicles.
- Developing on or adjacent to the ROW.
- Subdividing a property with SaskPower's ROW registered on the title.

YARD SAFETY IN URBAN AREAS

If you have an overhead power line in your yard:

- Do not fly kites nearby.
- Ensure you aren't able to reach a power line while standing on your patio/deck. If your line seems low, call us.
- Do not place decorations, bird houses, or plant vines on poles.
- Do not trim branches away from power lines yourself. SaskPower will do this for free.

WORKING NEAR AN UNDERGROUND LINE

Before starting any work that involves digging or disturbing the soil on a property where utilities are underground, it's law in Saskatchewan that you request a line locate.

Visit digsafesask.com or call **1-866-828-4888**.

Please note: there may be additional requirements under Occupational Health and Safety Regulations.

Visit publications.saskatchewan.ca

HOW TO RELOCATE A POWER LINE

Worried that your buildings, storage areas and other installations don't meet minimum clearances, or will encroach on the ROW?

Call us at **1-888-757-6937** or apply online. We'll come out and evaluate the circumstances of your installation.



To request electrical service changes visit saskpower.com/electricalchanges or scan the QR code.

FARMING NEAR POWER LINES

On average, SaskPower receives reports of more than 200 incidents of farm machinery contacting power lines per year. Many happen during the busy spring seeding and fall harvest seasons. Today's farm machinery – including augers, seeders, cultivators, combines and sprayers – is bigger than ever.

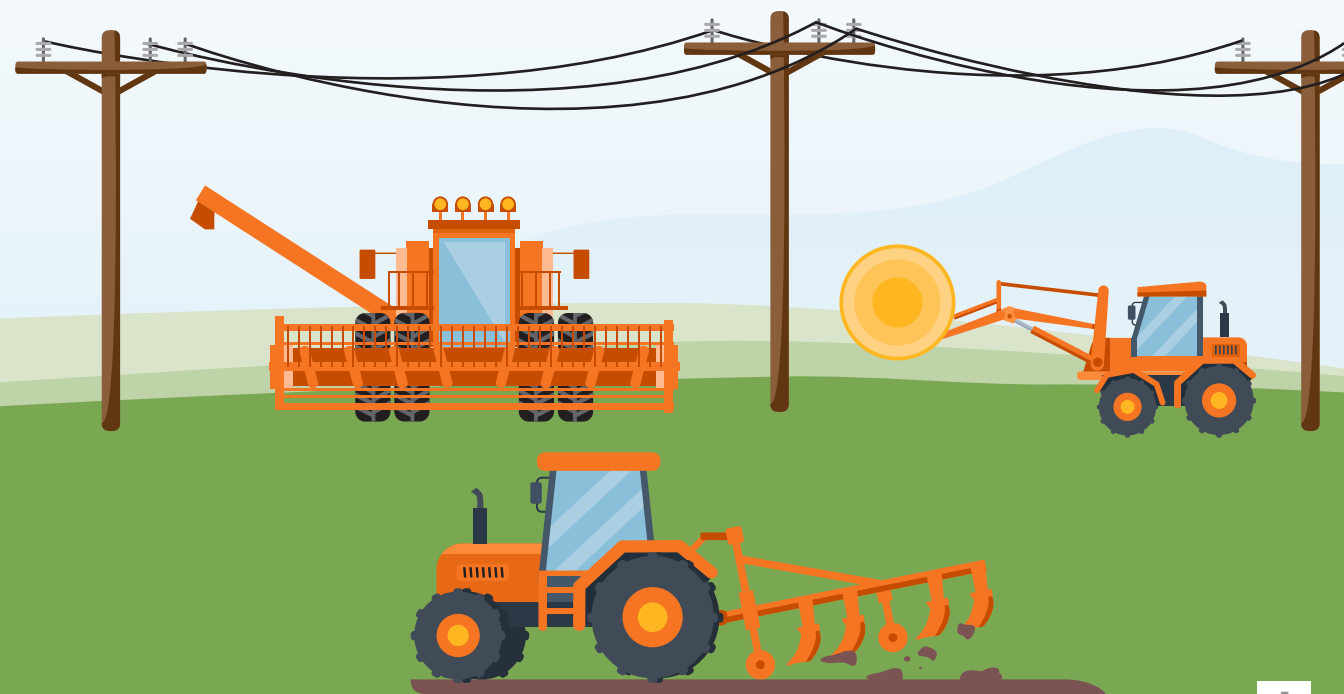
Plan your route ahead of time, lower your equipment where needed and use a spotter.

POWER LINES WITHIN ROAD ALLOWANCE

Many of our power lines are installed a half-metre inside road allowances. Buildings and other objects and equipment (e.g. fuel tanks) should not breach the safety clearance zones required around existing infrastructure. It's the responsibility of the developer and/or the engineer of record to ensure compliance with all of the various codes.

TAKE EXTRA CAUTION WHEN COMPLETING THE FOLLOWING TASKS:

- Relocating grain augers.
- Combining with auger or hopper extended.
- Relocating large equipment (typically with 'wings' folded up) such as air drills/seeders.
- Using backhoes, loaders, forklifts, etc.
- Moving sprayers into and out of fields via field approaches. Lines often cross these approaches.
- Placing equipment in or out of transport mode.
- Excavating or drilling; and
- Moving grain bins. Grain bins need to be kept at least 15 metres away from the nearest power line at all times.



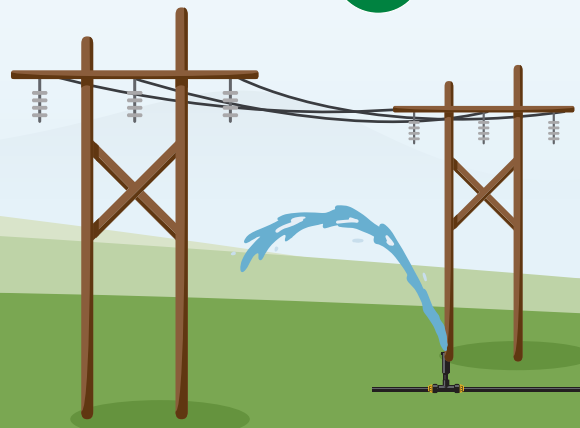
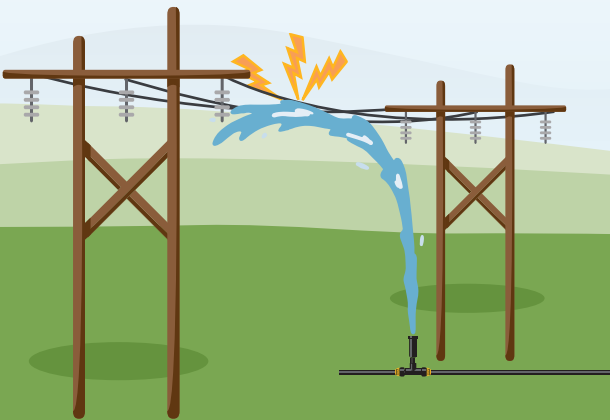
IRRIGATION AND WATER UNDER POWER LINES

Water and electricity are a dangerous mix. Never allow water to spray on power lines. A hose or pipe spraying a power line can create a direct path for electricity to flow through the watering equipment. Use low-angle irrigation equipment to maintain a safe clearance between the water jet and wires.

Before moving irrigation equipment, look up and around you to note any power lines that could be close enough to come into contact with equipment—and stay clear. Any contact between the long equipment and nearby power lines could be fatal or cause serious injury.

The diagram below shows a safe, low-angle irrigation solution that maintains safe clearance between the water jet and the live wires. An unsafe, high-angle irrigation solution (as seen on the left) sprays water on or near the live wires.

If a tree falls on a power line, it creates a path for electricity to reach the ground. Stay at least 10 metres back and call **911** or **310-2220**. Keep others away from the area until help arrives.



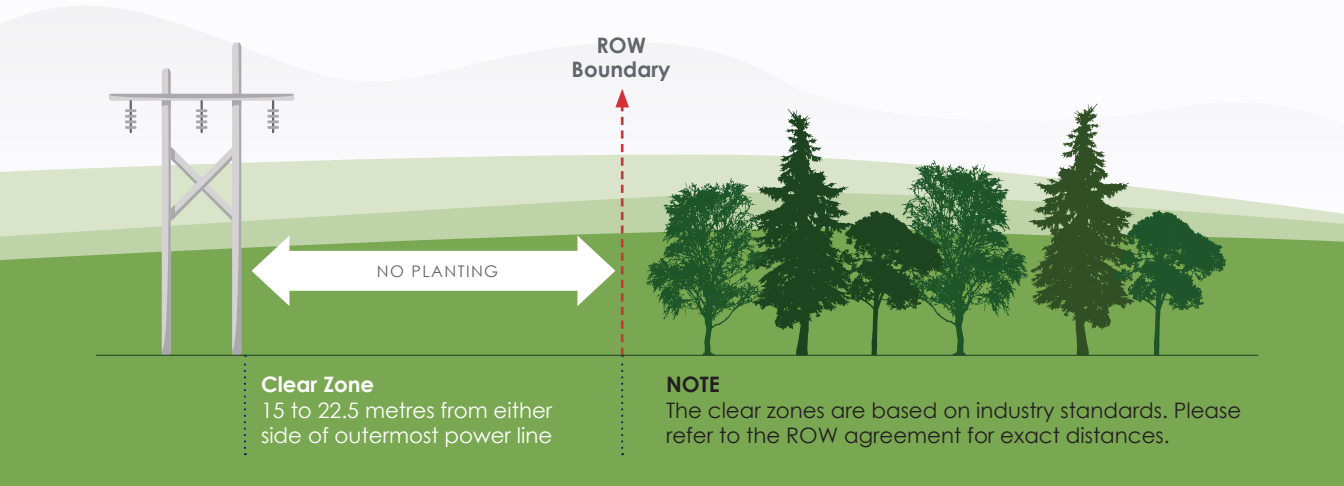
PLANTING NEAR POWER LINES

Vegetation contacting a power line is a major cause of power outages. To keep your power service reliable, be aware of your landscaping.

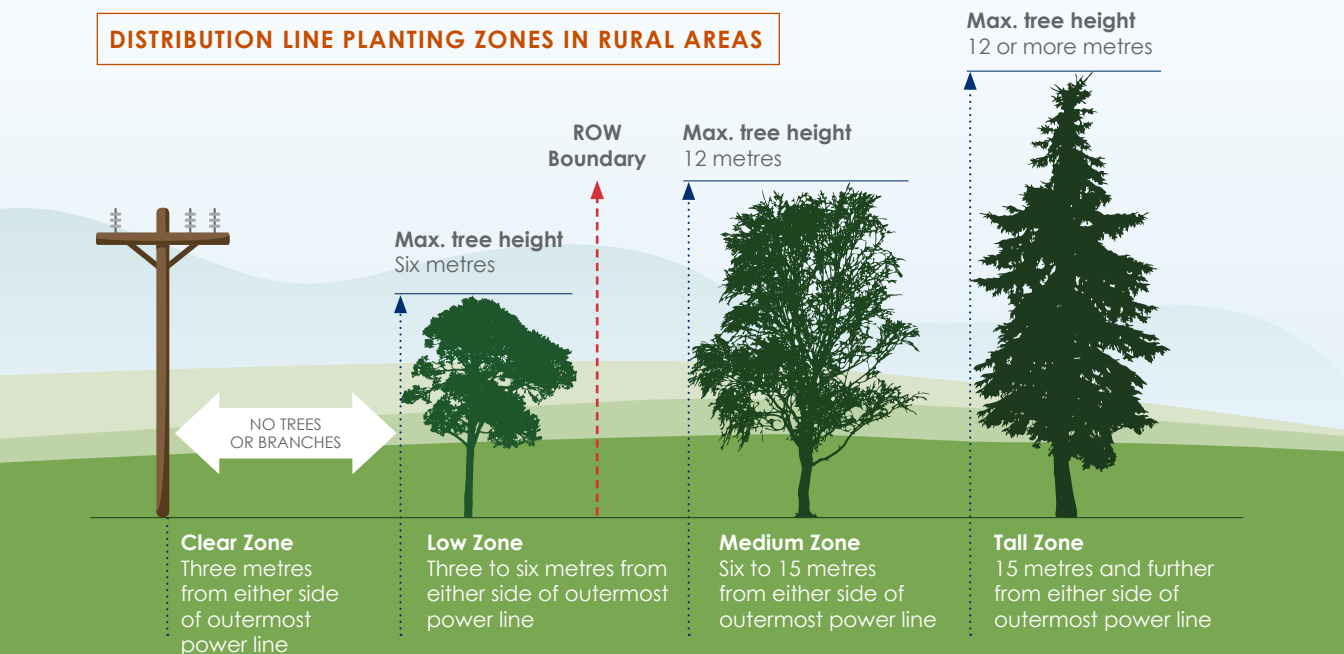
For transmission lines, the power lines that run from our power generation facilities to our substations where the power is converted to a lower voltage, no planting is permitted within the ROW.

For distribution lines, the power lines that carry power from our substations to our customers, there are four planting zones to help guide you.

TRANSMISSION LINE PLANTING ZONES IN RURAL AREAS



DISTRIBUTION LINE PLANTING ZONES IN RURAL AREAS



NOTE
Planting zones are based on industry standards but are subject to change based on risk.



TIPS TO FOLLOW WHEN PLANTING NEAR POWER LINES

It's best to contact us before you plant in or near the ROW, but here are some tips to get you started:



Regardless of the vegetation planted, SaskPower requires a tree/shrub-free zone directly underneath the line.



SaskPower performs planned vegetation maintenance within the ROW, and at that time we will notify you of any requirements. Note: you won't always get advance notification of this work in the case of an emergency.



When planting outside the ROW, we recommend not planting anything that will grow to be very tall, or that has weak root systems that might be prone to falling on power lines or structures.



For trees that present safety concerns, we have the right to remove them from under and around our power lines even if they're outside the ROW.



If you think a tree on the property needs to be removed, please reach out. It must be removed by a professional.



For more information or to request tree removal or trimming, please visit [saskpower.com/plantsmart](https://www.saskpower.com/plantsmart).

Report any damage to SaskPower
infrastructure immediately by calling

310-2220

Have a question?

Contact 1-888-757-6937

Monday – Friday, 8 a.m. – 6 p.m.

 **SaskPower**
Powering our future[®]